



TK International
020 7794 8700
www.t-k.co.uk

Residential Sales
Residential Lettings
Property Management

Sales Office:
9 Heath Street
Hampstead
London NW3 6TP
E: sales@t-k.co.uk

Lettings Office:
16-18 Heath Street
Hampstead
London NW3 6TE
E: lettings@t-k.co.uk

tk.international
TK International
TK International



St. Johns Wood Park

London
NW8

A modern and beautifully presented three bedroom, three bathroom apartment set on the fourth floor of a well maintained purpose built block, ideally located just 0.5 miles from St John's Wood Underground Station (Jubilee Line).

The property benefits from air conditioning and double glazed windows throughout and comprises a spacious reception room, contemporary kitchen, principal bedroom with built in storage and en suite shower room, second bedroom with en suite bathroom, third bedroom, separate WC and a study. Further advantages include first come first serve parking and an on site 24 hour concierge service.

£1,500 Per Week

SOLE AGENT

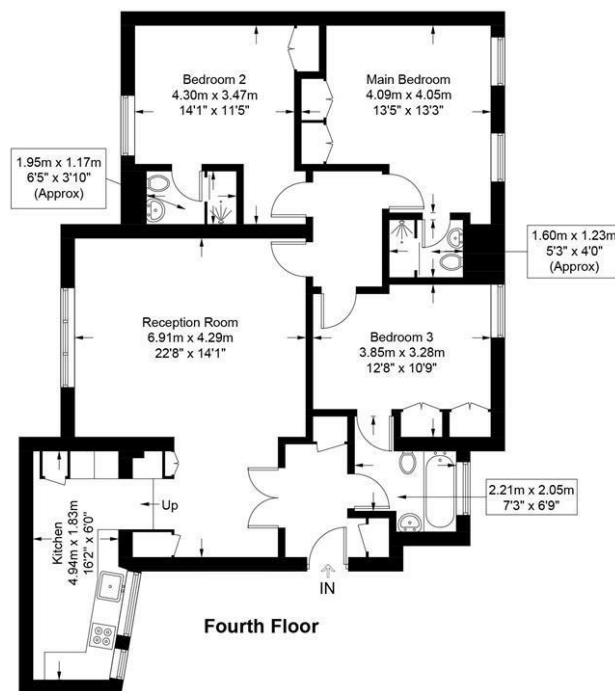
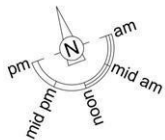






Boydell Court, NW8

Approximate Gross Internal Area = 1097 sq ft / 101.9 sq m



This plan is for layout guidance only and is not drawn to scale unless stated. All dimensions, including windows, doors, and the Total Gross Internal Area (GIA), are approximate. For precise measurements, please consult a qualified architect or surveyor before making any decisions based on this plan.



**Certified
Property
Measurer**